

Hello, we are includem.

We provide intensive, bespoke support to young people and families in challenging circumstances.

Our model of support is based upon building solid relationships of trust.

Through this approach we are able to help young people make positive life choices and progress towards the type of future they want to live.





Rights Based



includem



AND Trauma Informed

The Promise's 10 principles of family support

These were produced by and with children, young people and families – those who's rights will be upheld through delivering the principles



Co-Producing

Co-Designing

Engaging

Consulting

Informing

Educating

Coercing

Doing With

Doing For

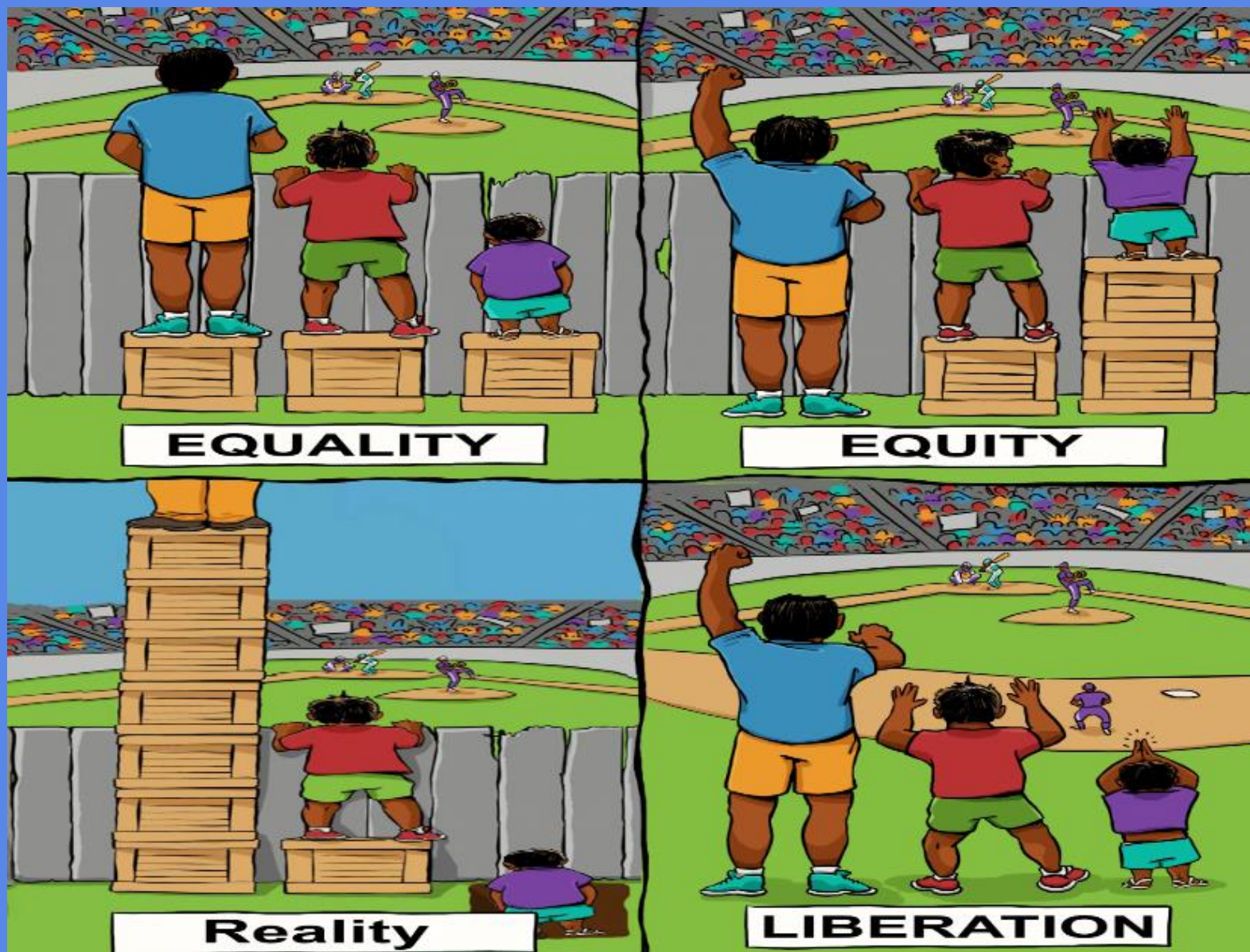
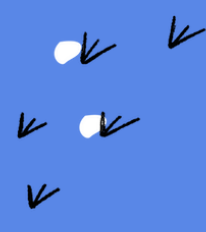
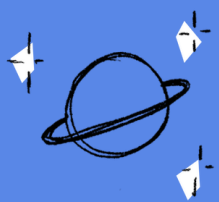
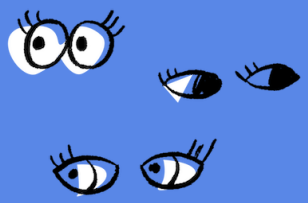
Doing To



includem 

The Benefits of Participation

- ☒ Increased level of satisfaction with services
- ☒ Better engagement and outcomes, working towards shared goals and tailoring to service users' needs and wishes
- ☒ Improved service quality, particularly in regard to access and responsiveness.
- ☒ Increased choice and control
- ☒ Provides an effective and efficient means of understanding needs and issues firsthand
- ☒ Leads to more efficient and effective use of services
- ☒ Leads to greater confidence, inclusion & health and wellbeing



Some other challenges and tensions

Levels of participation
↓

Openings > Opportunities > Obligations

5. Children share power and responsibility for decision-making.

Are you ready to share some of your adult power with children?

Is there a procedure that enables children and adults to share power and responsibility for decisions?

Is it a policy requirement that children and adults share power and responsibility for decisions?

4. Children are involved in decision-making processes.

Are you ready to let children join in your decision-making processes?

Is there a procedure that enables children to join in decision-making processes?

Is it a policy requirement that children must be involved in decision-making processes?

This point is the minimum you must achieve if you endorse the UN Convention on the Rights of the Child

3. Children's views are taken into account.

Are you ready to take children's views into account?

Does your decision making process enable you to take children's views into account?

Is it a policy requirement that children's views must be given due weight in decision-making?

2. Children are supported in expressing their views.

Are you ready to support children in expressing their views?

Do you have a range of ideas and activities to help children express their views?

Is it a policy requirement that children must be supported in expressing their views?

1. Children are listened to.

START HERE

Are you ready to listen to children?

Do you work in a way that enables you to listen to children?

Is it a policy requirement that children must be listened to?

includem 



Thank you.

